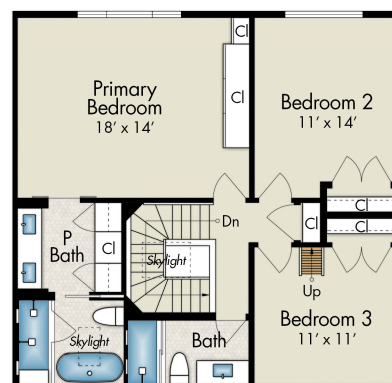


2400 VISTA DEL MAR LN

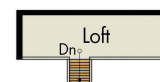
TIBURON, CA 94920



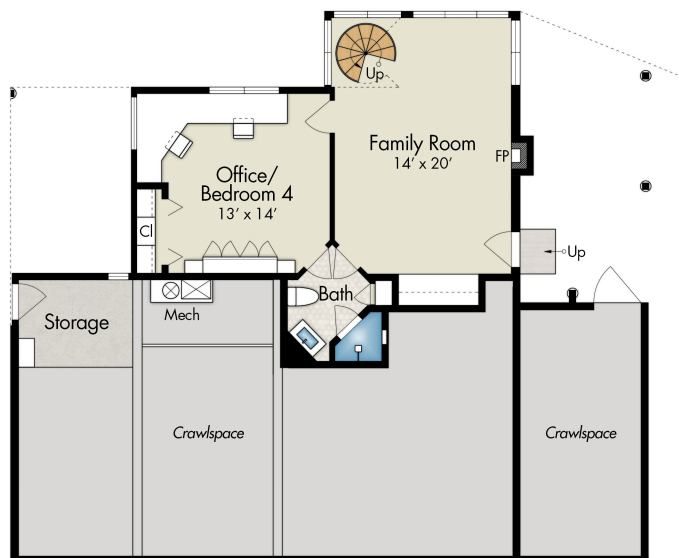
Main Level 994 SQ FT
Plus Garage: 471 SQ FT



Upper Level 886 SQ FT



Loft (Bedroom 3)
45 SQ FT



Lower Level 615 SQ FT
Plus Storage: 63 SQ FT

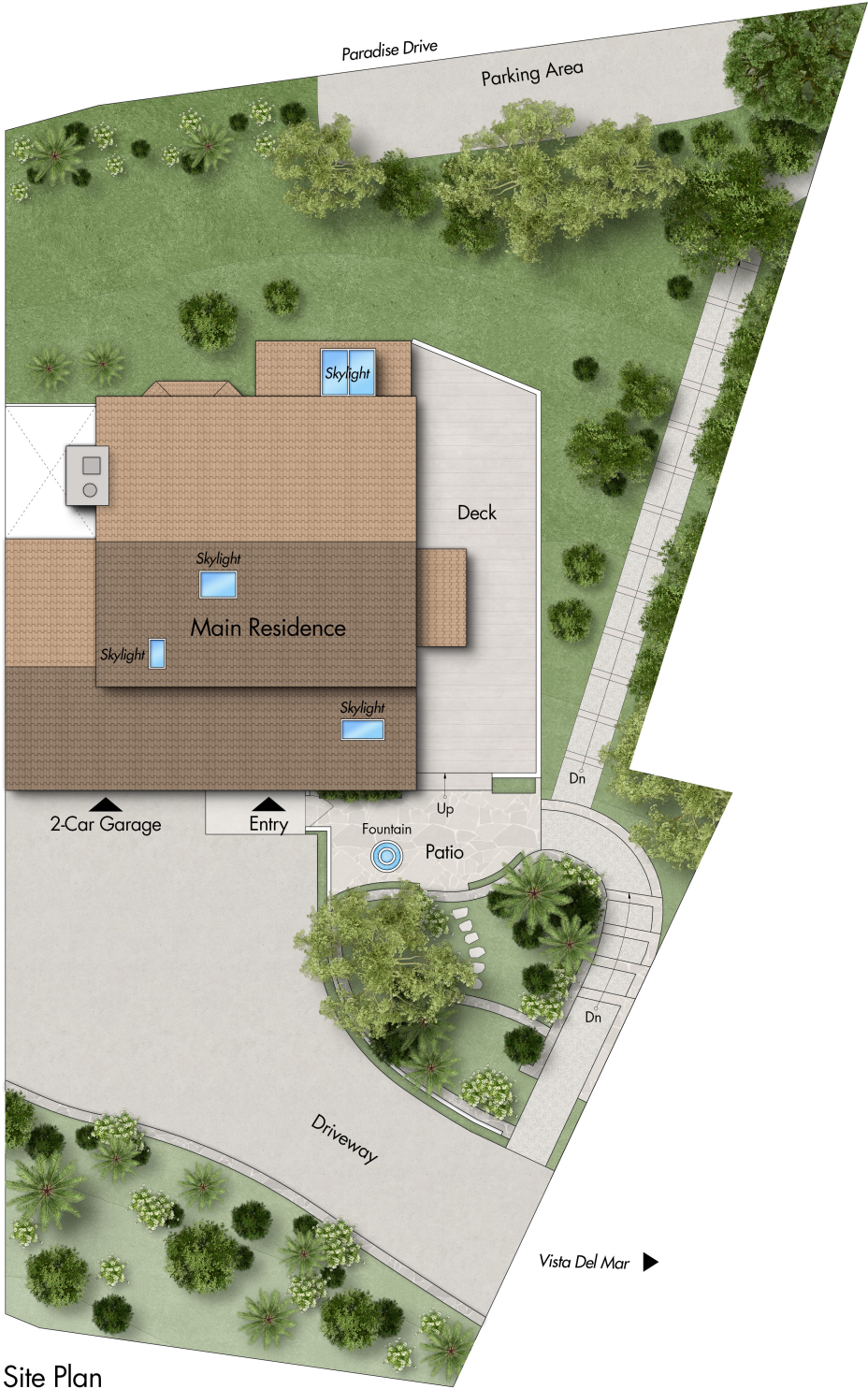
ESTIMATED TOTAL FINISHED SQUARE FOOTAGE:
2,495 SQ FT

Above grade: 1,880 SQ FT
Below grade: 615 SQ FT
Plus 471 SQ FT Garage (Main Level)
Plus 45 SQ FT Loft (Bedroom 3)
Plus 63 SQ FT Loft (Lower Level)

Calculated per ANSI Standard Z765-2003
Estimated Total Finished and Unfinished Square Footage:
3,074 SQ FT



2400 VISTA DEL MAR LN
TIBURON, CA 94920



Site Plan

